

La lettre " u "

J'entends



1 **colorie** Colorie le dessin si tu entends [u]



2 **Coche** la case quand tu entends [u]



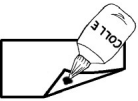
--	--	--	--

--	--

--	--	--

--	--	--	--	--

3 **Colle** les images ensemble lorsque tu entends une même syllabe .



j u	l u



4



Colorie les cases contenant la lettre u u U U

c	u	U	y	n	W	n	U	m	u
u	n	U	U	Y	y	Y	u	n	U

5



Entoure toutes les lettres u u U U

- Lulu joue avec la souris.
- Lucien joue de la musique.

6



Colorie les syllabes su lu ru us ur et selon le code couleur.

su	lu	ru	us	ur
----	----	----	----	----

su	lu	us	ur	ur	us	lu	su
ru	su	lu	us	us	lu	su	ru
ur	ru	su	lu	lu	su	ru	ur
su	ur	ru	su	su	ru	ur	su
ru	su	ur	ru	ru	ur	su	ru



La lettre " u "

J'entends



1 **colorie** Colorie le dessin si tu entends [u]



2 **Coche** la case quand tu entends [u]



3 **Colle** les images ensemble lorsque tu entends une même syllabe .

j u	l u	t u



4  **colorie** Colorie les cases contenant la lettre **u u U U**

c	u	U	y	n	W	n	u	m	u	U	y
u	n	U	U	Y	y	Y	u	n	u	U	m

5  **entoure** Entoure toutes les lettres **u u U U**

- Lulu joue avec la souris.
- Lucien joue de la musique.
- Ursula achète une tortue !

6  **colorie** Colorie les syllabes **su lu ru us ur** et leur. selon le code couleur.

su	lu	ru	us	ur
----	----	----	----	----

su	lu	us	ur	ur	us	lu	su
ru	su	lu	us	us	lu	su	ru
ur	ru	su	lu	lu	su	ru	ur
su	ur	ru	su	su	ru	ur	su
ru	su	ur	ru	ru	ur	su	ru
su	ur	ru	su	su	ru	ur	su



La lettre " u "

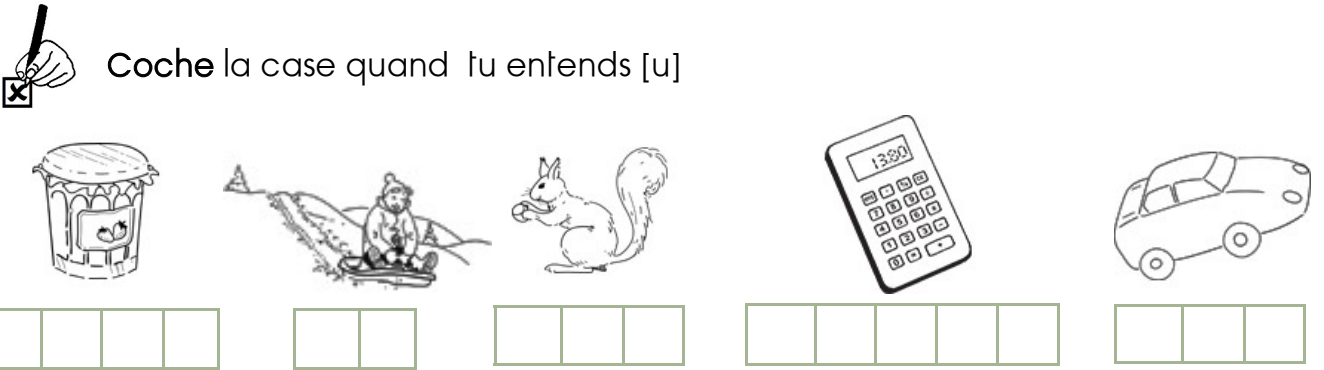
J'entends



1 **colorie** Colorie le dessin si tu entends [u]



2 **coche** Coche la case quand tu entends [u]



3 **colle** Colle les images ensemble lorsque tu entends une même syllabe .

j u	l u	b u	t u



4



Colorie les cases contenant la lettre u u U U

c	u	U	y	n	W	n	u	m	u	U	y
u	n	U	U	Y	y	Y	u	n	U	U	m
yu	U	y	n	U	i	u	n	U	Y	y	u

5



Entoure toutes les lettres u u U U

- Lulu joue avec la souris.
- Lucien joue de la musique.
- Ursula achète une tortue !

6



Colorie les syllabes su lu ru us ur et selon le code couleur.

su	lu	ru	us	ur
----	----	----	----	----

su	lu	us	ur	ur	us	lu	su
ru	su	lu	us	us	lu	su	ru
ur	ru	su	lu	lu	su	ru	ur
su	ur	ru	su	su	ru	ur	su
ru	su	ur	ru	ru	ur	su	ru
su	ur	ru	su	su	ru	ur	su
ur	ru	su	lu	lu	su	ru	ur



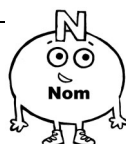


7



Colle l'étiquette dans la colonne correspondante.

A line drawing of two young girls standing together, one with her arm around the other's shoulder.	A line drawing of a bed with a metal frame and a blanket.	A line drawing of a chicken standing.





8



Ecris les syllabes manquantes. ru - lu - sa



une . . e



le . . t



Ecris les syllabes manquantes li - ri



du . . ri



un . . t



9



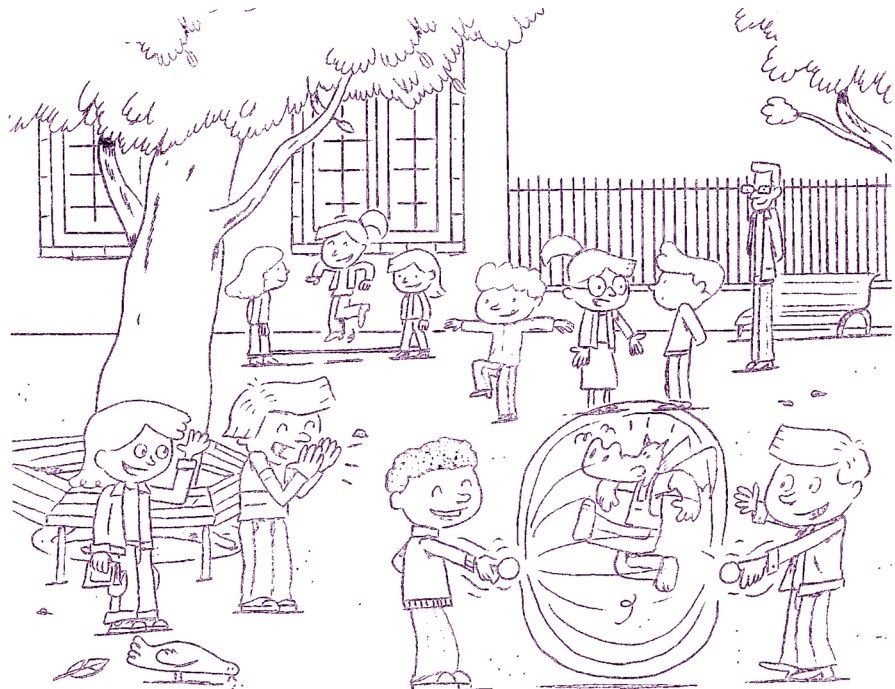
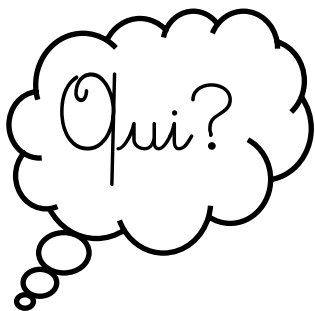
Entoure le mot correct.

Taoki a < sué / rué . Mais < il / elle a réussi.

10



Colorie les personnages puis écris leur prénom.



Blank writing lines for names.

Blank writing lines for names.

Blank writing lines for names.








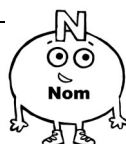
7



Colle l'étiquette dans la colonne correspondante.

3





8



Ecris les syllabes manquantes. ru - lu - sa - li - ri



une . . . e



le t



un



une e



9



Entoure le mot correct.

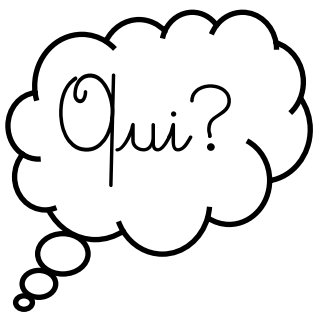
Taoki a < sué / rué . Mais < il / elle a réussi:

il est < rassuré / sur le sol . Lili < râle . / le salue .

10



Colorie le nom des personnages puis recopie leur prénom.



Taoki a sué mais il a réussi.

Lili le salue.

Hugo l'a élu: « L'as des as »!

Blank handwriting lines for copying the name Taoki.

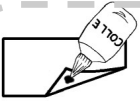
Blank handwriting lines for copying the name Lili.

Blank handwriting lines for copying the name Hugo.





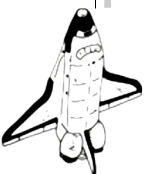
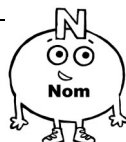
7



Colle l'étiquette dans la colonne correspondante.

A line drawing of two young girls standing together, one with her arm around the other's shoulder.	A line drawing of a bed with a metal frame and a blanket.	A line drawing of a chicken standing.

3





8



Ecris les syllabes manquantes.



une . . . e



le t



un



une e



9



Entoure le mot correct.

Taoki a < sué / rué . Mais < il / elle a réussi:

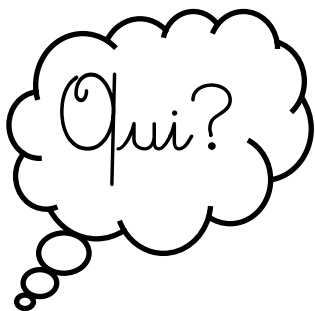
il est < rassuré / sur le sol . Lili < râle . / le salue .

Hugo l'a < relu / élu : « L'as des < as » . / aras » .

10



Colorie le nom des personnages puis recopie leur prénom.



Taoki a sué mais

il a réussi : il est

rassuré. Lili le salue.

Hugo l'a élu:

« L'as des as »!

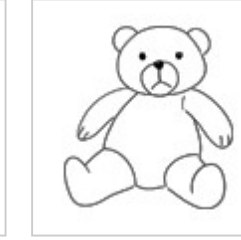
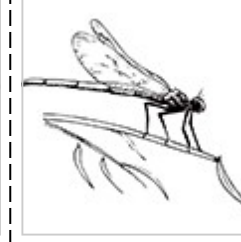
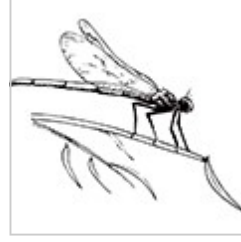
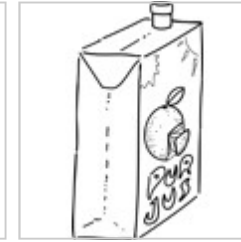
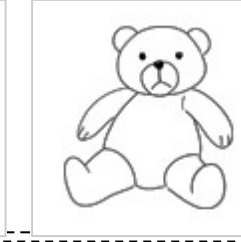
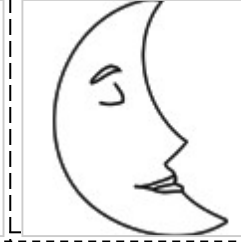
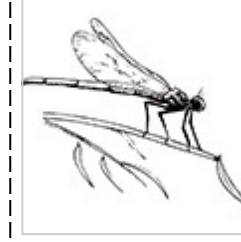
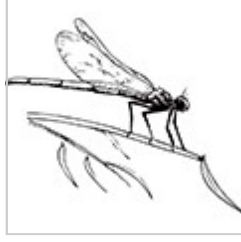
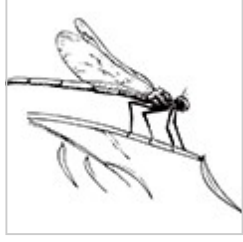
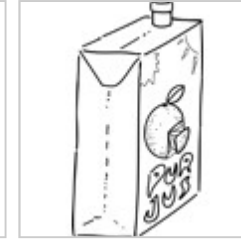
Blank handwriting lines for the first sentence.

Blank handwriting lines for the second sentence.

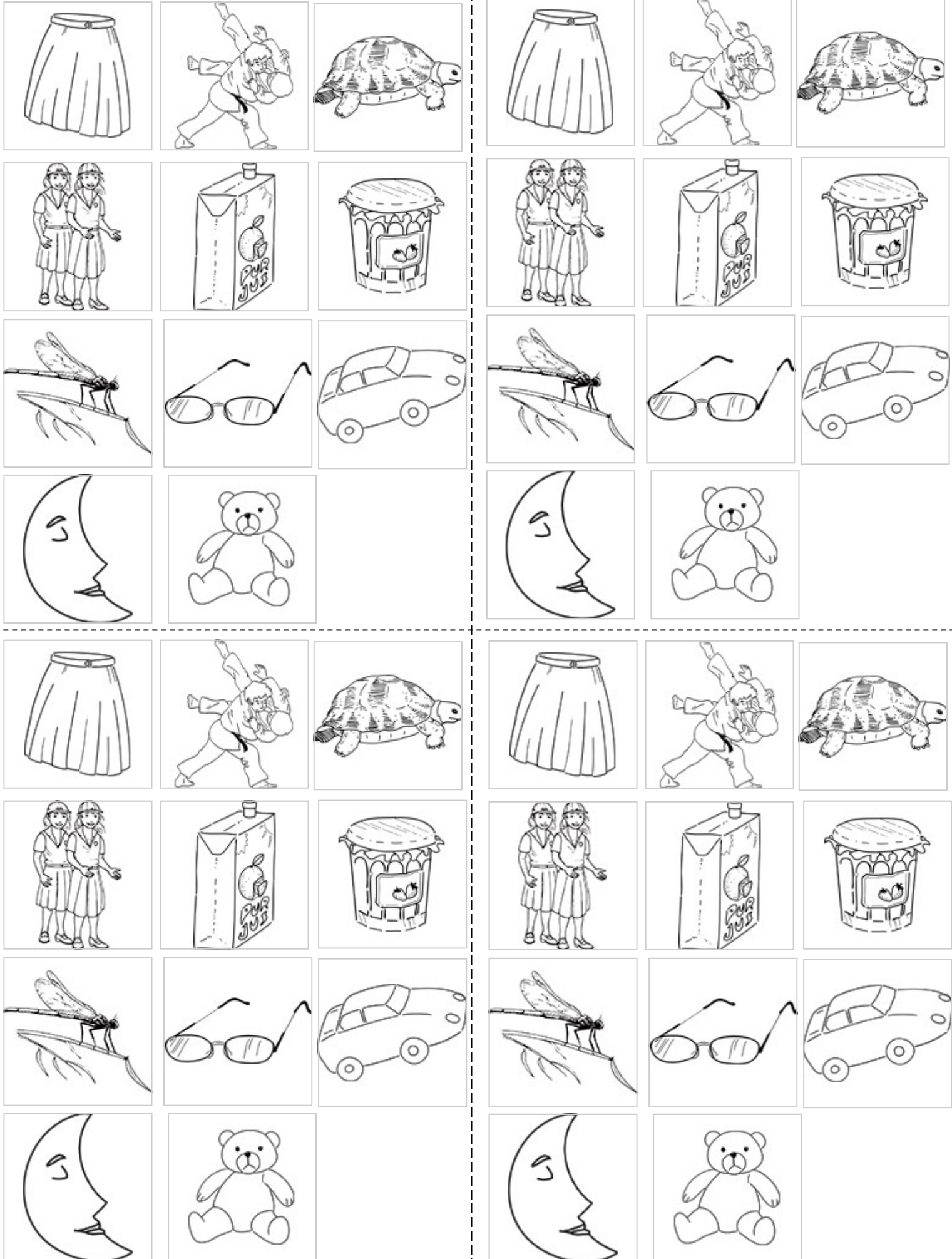
Blank handwriting lines for the third sentence.



Exercice de phonologie 3: étiquettes à coller 6 exemplaires: jupe, judo, jumelles, jus de fruit, libellule, lunettes, lune, peluche



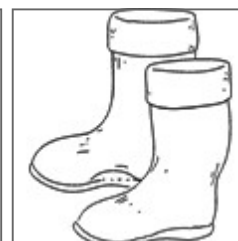
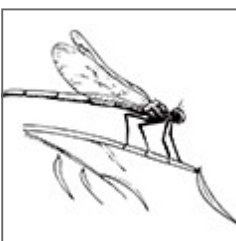
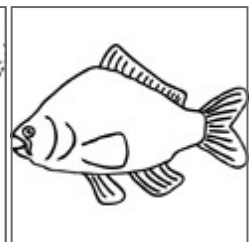
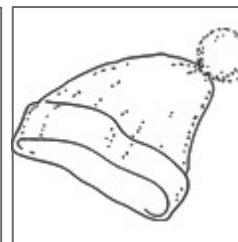
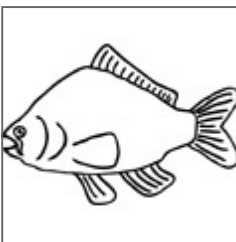
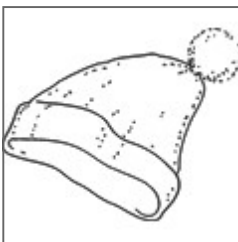
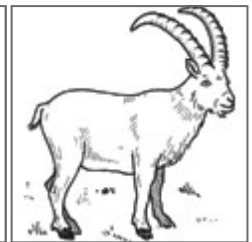
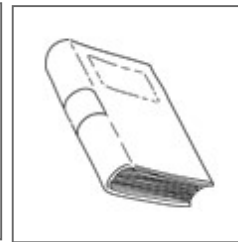
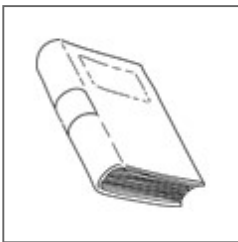
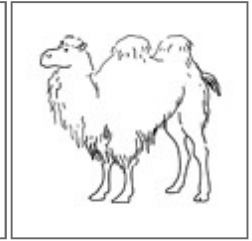
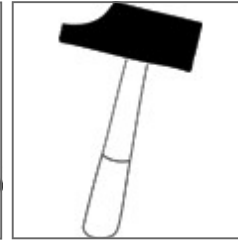
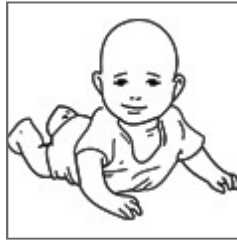
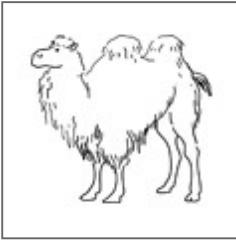
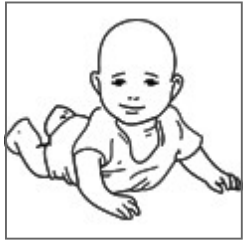
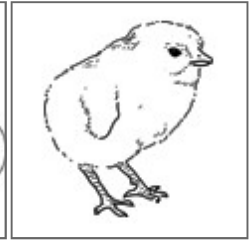
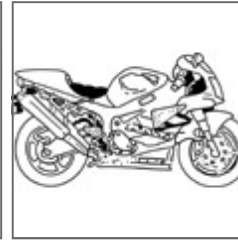
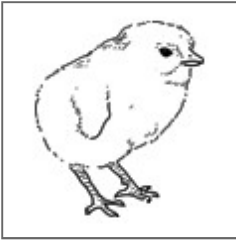
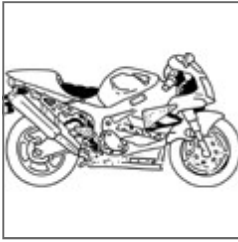
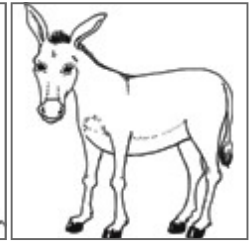
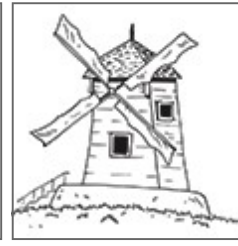
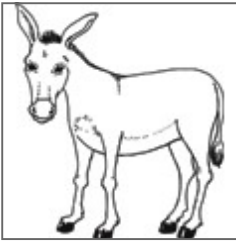
Exercice de phonologie 3: étiquettes à coller 4 exemplaires: jupe, judo, jumelles, jus de fruit, libellule, lunettes, lune, peluche, tortue, confiture, voiture



Exercice de phonologie 3: étiquettes à coller 3 exemplaires: jupe, judo, jumelles, jus de fruit, libellule, lunettes, lune, peluche, tortue, confiture, voiture, bus, bureau, bûcheron



Exercice de grammaire 7: étiquettes à coller (2 exemplaires (personnes, objets, animaux))



La lettre " U " correction

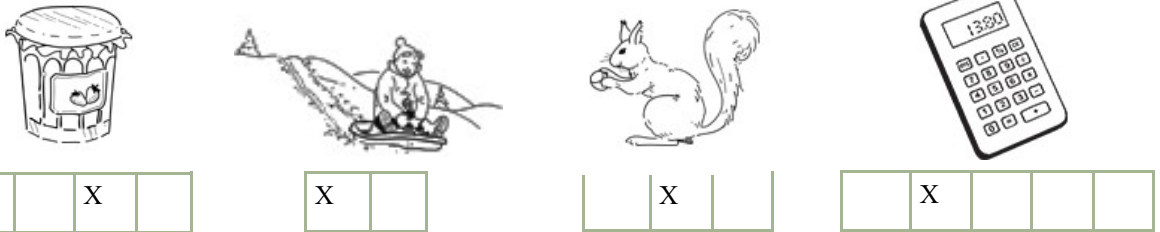
J'entends



1 **colorie** Colorie le dessin si tu entends [u]



2 **Coche** la case quand tu entends [u]



3 **Colle** les images ensemble lorsque tu entends une syllabe identique.

j u	l u



La lettre " U " correction

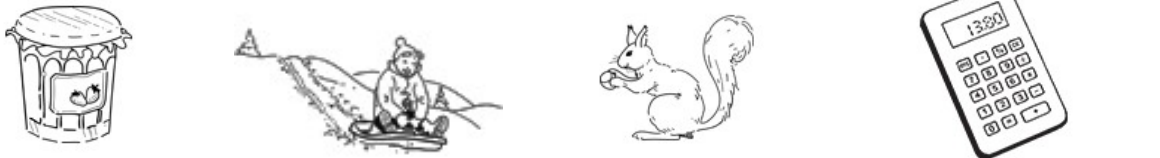
J'entends



1 **colorie** Colorie le dessin si tu entends [u]



2 **Coche** la case quand tu entends [u]



	X	
--	---	--

X	
---	--

X	
---	--

X			
---	--	--	--

3 **Colle** les images ensemble lorsque tu entends une même syllabe .

c	l u	t u





1 **colorie** Colorie le dessin si tu entends [u]



2 **Coche** la case quand tu entends [u]



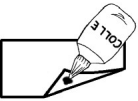
	X	
--	---	--

X	
---	--

X	
---	--

X			
---	--	--	--

3 **Colle** les images ensemble lorsque tu entends une même syllabe .



. u	. u	. u	. u

